



Parents' Newsletter 2

Monday 26th September 2016

Dear Parents/Carers,

Well Done



Well done to all of our new children who have settled so well into school life. We are very impressed with how everyone has settled with their new classroom routines.

Big Lottery Funding

Last term we applied for a £10,000 grant from the Big Lottery Funding to support us in replacing our playtrail. As you know, the children love to play on this equipment but it is no longer fit for purpose. I'm really pleased to let you know that we have been successful with our application and have been awarded **£10,000** towards the cost of a new trail. The School Council have been working with companies to come up with a special design. I will keep you up to date with the progress of this project.



Library Books

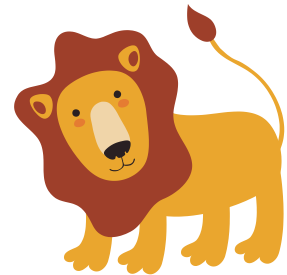
Each class have a weekly library slot where the children have an opportunity to take home a book to share with you.

We have discussed looking after our new books with the children and hope that you will remind the children of these rules at home.



Leo the Library Lion always looks after books. He says...

- Make sure your hands are clean.
- Don't eat or drink when you are reading.
- Hold the book nicely to turn the pages carefully.
- Never write or draw in a reading book.
- Never lend your book to younger children or the dog.
- Always keep your book in your book bag.
- Never put water bottles or snacks in your book bag.



Year 1 and 2 Reading Challenge

In order to encourage reading at home children in Years 1 and 2 are awarded a coloured spot each time that they read to an adult at home. Please support your child as often as possible with this as regular reading practice results in better progress.

Reading Buddies

We really appreciate the support of the many volunteers who come into Manor on a weekly basis to support children with reading. If you would like to become a 'Reading Buddy' please come into the school office and let us know.



Harvest

Our Harvest Service will be taking place this week - Thursday 29th September at 2.00p.m.. Children, as always, are invited to bring in food and other items i.e. pasta sauce, fruit (tinned), biscuits, carrots (tinned), pasta, rice pudding (tinned) UHT milk, powdered milk, coffee, cereals, tomatoes, fruit juice and sugar. Following the service, donations are put into parcels and given via the local Food Bank to those in need locally.



Thank you for your support.

E Safety

At school we will be teaching the children about the importance of being safe when using the internet. Here is a list of the messages that your children will hear:



- People you don't know are strangers. They're not always who they say they are.
- Be nice to people on the computer like you would in the playground.
- Keep your personal information private.
- If you ever get that 'uh oh' feeling, you should tell a grown up you trust.

Please remind your children when they are on-line at home.

Tapestry Workshop

Thank you to Mrs Welling for leading a Tapestry online learning journey and



e-safety workshop for parents this morning. We hope that you found the session useful.

Parent Consultation Evening

This week our class teachers have a list of Parents Evening time slots for you to sign up to. Parents Evenings for this term will take place on **Wednesday 5th October** 3.30p.m. – 7.30p.m. and **Thursday 6th October** 3.30p.m. – 6.00p.m..

Health and Safety

Please be aware of health and safety issues at the start and end of the day. For the safety of our children:



- Please do not drive up the school driveway and do not use the staff car park first thing in the morning or at collection time in the afternoon. Space is limited and it is important that the driveway remains clear so that in the event of an emergency, vehicles can access the building quickly. The school gates will be closed between 8.30am and 4.30pm.
- Please do not stop or park on the yellow lines or park across driveways in roads adjacent to the school.
- Guide your children across the road safely.
- Please do not leave dogs unattended at any time and do not bring dogs onto the school grounds or anywhere near where children are entering and exiting the school.
- Talk to your children about safety issues in relation to approaching any dog or animal not known to them.
- Our site is completely NO SMOKING.



Thank you for your cooperation in this matter.

Playtrail Reminder

For Health and Safety reasons the school do not permit children to go on the play trail before or after school. Thank you for your support in this matter.

Wild Play Project

Claire Pearce from the Wild Play project will be working with us to develop a wild play area in the Manor. In order to start the project she is asking children and parents in the area about existing use of the site. Claire will be joining our next School Council meeting on 9th October and also coming along to our Parents Evenings this term. If you have a spare moment please have a go at filling in one of her questionnaires.

PTFA AGM

Our PTFA AGM will be taking place on Monday 3rd October at 2.30pm. We hope that you will be able to come along.

And finally...

Don't forget that our school photographer will be visiting Manor tomorrow morning.

Best wishes,

Michelle Hale

Headteacher

Diary Dates

Tuesday 27 th September	Children's Photos - portraits
Thursday 29 th September	2.00pm Harvest Service – Parents welcome
Monday 3 rd October	PTFA AGM at 2.30pm – all welcome
Wednesday 5 th October	Parents Evening 3.30pm – 7.30pm
Thursday 6 th October	Praizin' Hands – Healthy Lifestyles

Thursday 6 th October	Parents Evening 3.30pm – 6.00pm
Saturday 15 th October	Love in a Box at the Good Shepherd Church 2pm-4pm
Sunday 23 rd October	Sunday's Cool 11.30am – 12.30pm
24 th – 28 th October	Half Term
Wednesday 2 nd November	Open Morning
Monday 7 th November	Open Morning
Thursday 17 th November	Open Afternoon
Friday 18 th November	Children in Need – Dress spotty
Sunday 27 th November	Sunday's Cool 11.30am-12.30pm
Monday 28 th November	Christmas Crafts Day
Tuesday 6 th December	3Ts Christmas Party
Wednesday 7 th December	2.15pm Christmas Nativity
Thursday 8 th December	9.15am Christmas Nativity – adults only
Tuesday 13 th December	9.10 Christingle Service at All Saints Church, Fawley – Parents welcome, more details to follow
Tuesday 13 th December	Christmas Lunch
Tuesday 13 th December	School Christmas Disco
Thursday 15 th December	Praizin' Hands - Nativity
Friday 16 th December	Christmas Jumper Day
19 th December – 2 nd January	Christmas Holidays
Thursday 12 th January	Praizin' Hands
Tuesday 3 rd January	Start of the Spring term
Wednesday 8 th February	Pantomime – Beauty and the Beast (<i>funded by the PTFA</i>)
Thursday 16 th February	Praizin' Hands
Friday 17 th February	INSET Day – School closed
20 th -24 th February	Half Term
Monday 27 th February	Start of Spring term 2
Friday 24 th March	Red Nose Day 2017
Monday 10 th April – Friday 21 st April	Easter Holidays
Monday 24 th April	First day of the Summer term
Friday 26 th May	INSET Day – School closed
29 th May – 2 nd June	Half term
Monday 5 th June	Start of Summer term 2
Friday 21 st July	Last day of the Summer term
Monday 24 th and Tuesday 25 th July	INSET Days – School closed

Great effort has been taken to ensure that dates are correct at the time of publication; however, they may be subject to change.

All dates are available on the school website.